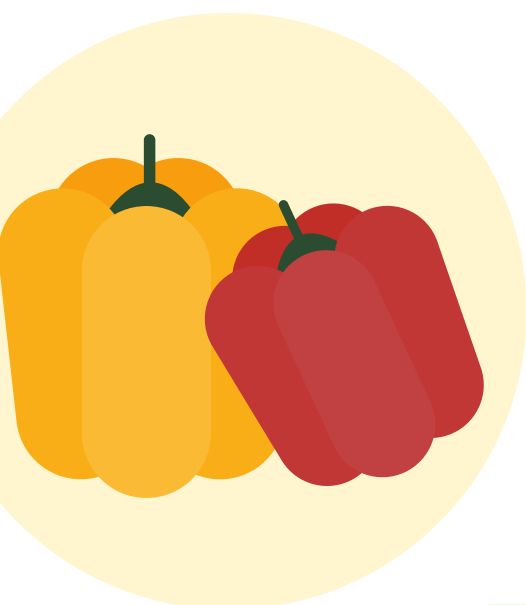


SLO COUNTY

Summer

PLANTING GUIDE



PEPPERS

Recommended planting method: Transplant
45-60 days seed to maturation

Min. spacing: 12 inches

North County Inland: Mid April - Mid July

South County Inland: Early April - Mid July

Coastal: Early April - Early July

ZUCCHINI

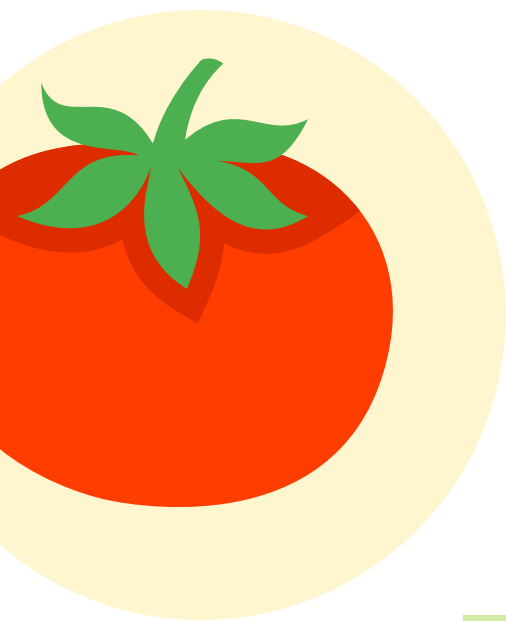
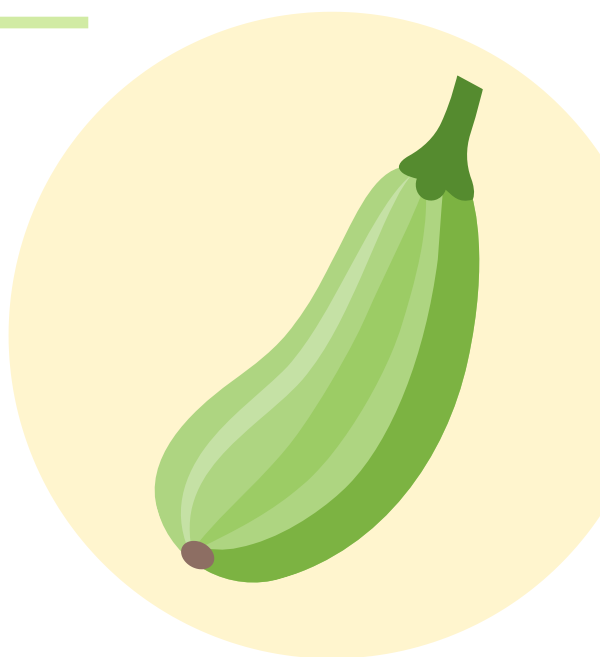
Recommended planting method: Direct seed
40-60 days seed to maturation

Min. Spacing 24 inches

North County Inland: Late April - Early July

South County Inland: Late April - Late July

Coastal: Late April - Late June



TOMATOES

Recommended planting method: Transplant
60-85 days seed to maturation

Min spacing: 18 inches

North County Inland: Mid April - Late June

South County Inland: Early April - Mid May

Coastal: Early April - Early May

CUCUMBERS

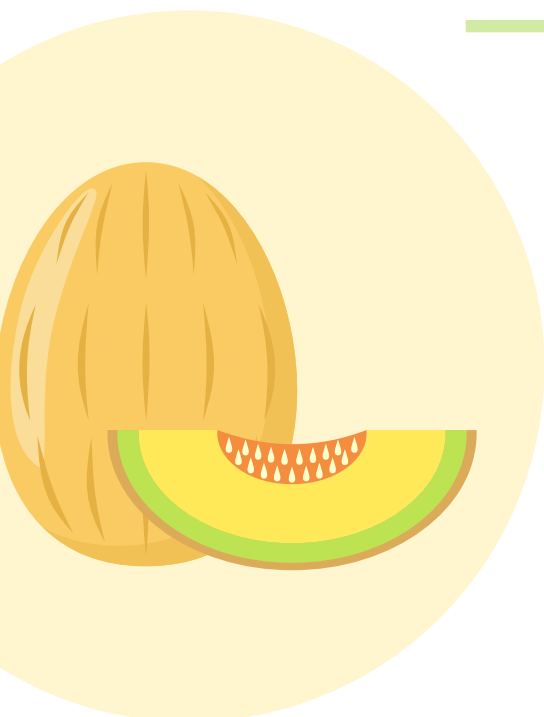
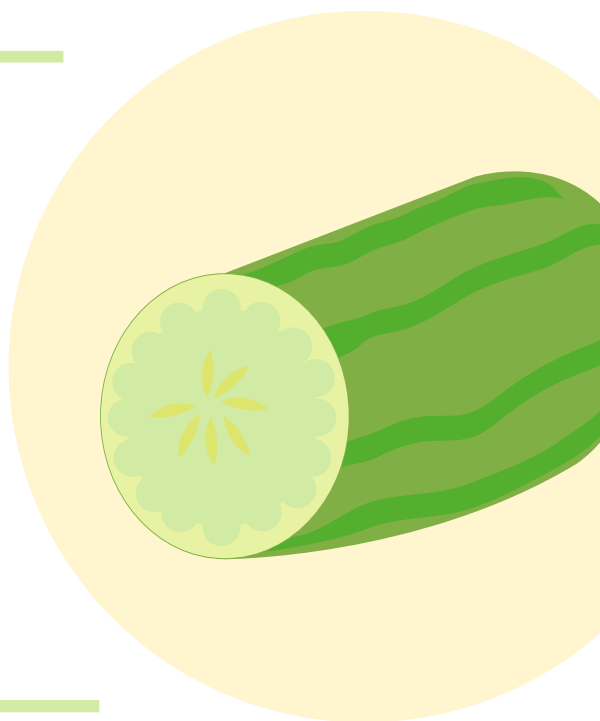
Recommended planting method: Direct seed
55-75 days seed to maturation

Min. Spacing: 24 inches

North County Inland: Late April - Late June

South County Inland: Late April - Early July

Coastal: Late April - Mid June



MELONS

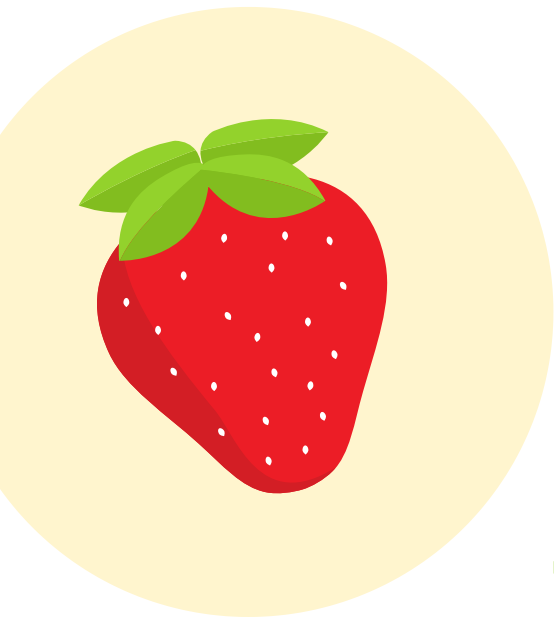
Recommended planting method: Direct seed
70-100 days seed to maturation

Min. Spacing: 24 inches

North County Inland: Late April - Early June

South County Inland: Late April - Late May

Coastal: Late April - Early May



STRAWBERRIES

Recommended planting method: Transplant
Min. Spacing: 12 inches
Perennial

EGGPLANT

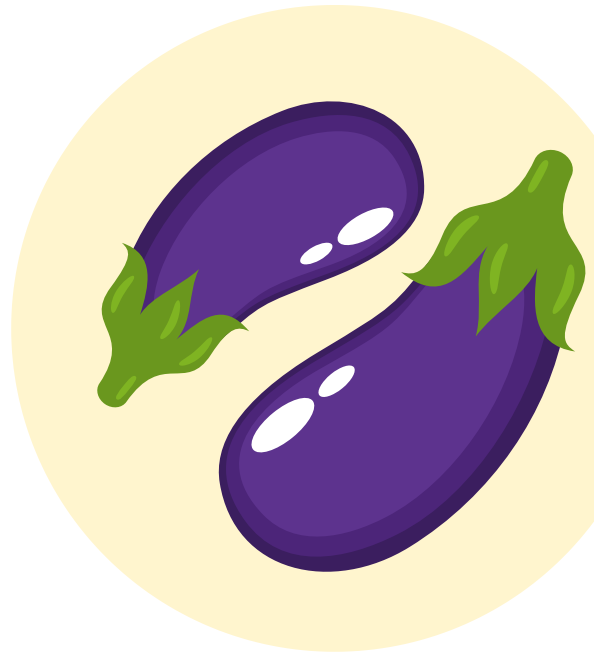
Recommended planting method: Transplant
50-70 days seed to maturation

Min spacing: 10 in.

North County Inland: Mid April - Mid June

South County Inland: Early April - Mid June

Coastal: Early April - Early July



PUMPKINS

Recommended planting: Direct Seed

90-110 days seed to maturation

Min. Spacing: 36 inches

North County Inland: Late April - Early June

South County Inland: Late April - Early June

Coastal: Late April - Early June

BEANS

Recommended planting: Direct Seed

50-60 days seed to maturation

Min. Spacing: 6 inches

North County Inland: Late April - Late July

South County Inland: Early May - Early Aug

Coastal: Mid May - Early September



CORN

Recommended planting method: Direct seed

60-80 days seed to maturation

Min. Spacing: 6 inches

North County Inland: Early May - Early July

South County Inland: Early May - Late June

Coastal: Early May - Mid June

FOR OUR FULL PLANTING CALENDAR, VISIT
ONECOOLEARTH.ORG



@ONECOOLEARTH



ONE COOL EARTH